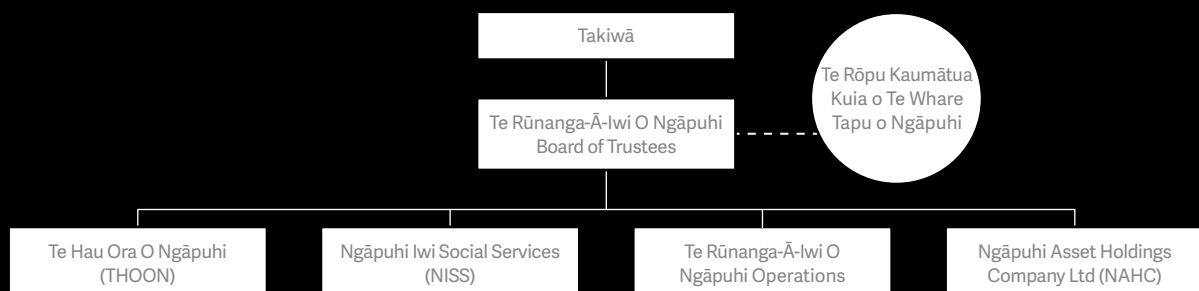
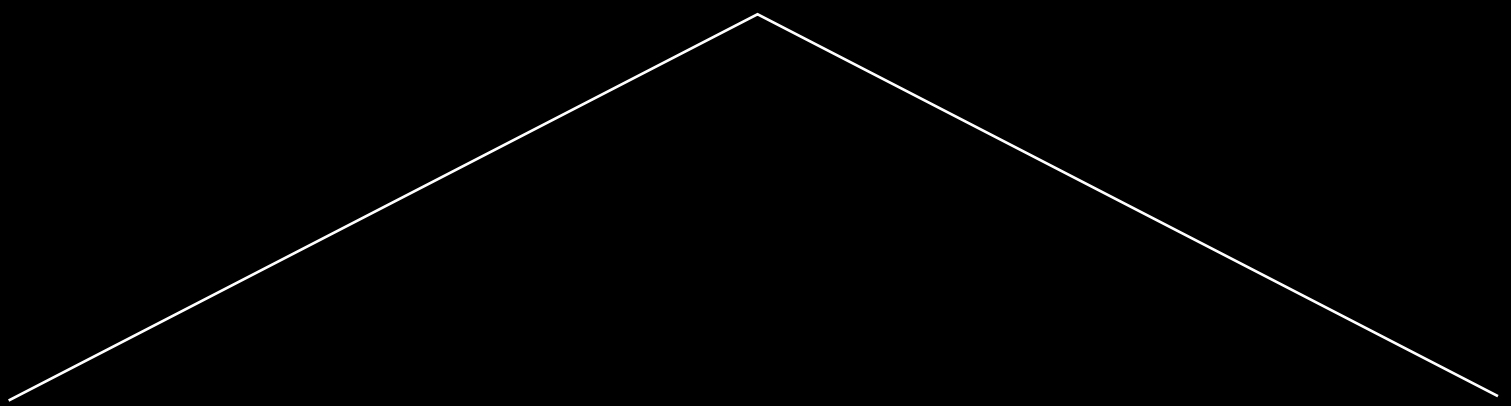




ACTING CHAIR'S REPORT

Tā te Heamana Taupua o Te Rūnanga-Ā-Iwi O Ngāpuhi



TE RŪNANGA-Ā-IWI O NGĀPUHI BOARD OF TRUSTEES

Carol Dodd	Acting Chair
Wane Wharerau	Acting Deputy Chair
Raniera T Tau	Chair
Te Rau Allen	Trustee
Ngawai Tuson	Trustee
Brian Joyce	Trustee
Mike Kake	Trustee
Helene Leaf	Trustee
Lorraine Young	Trustee
Keith Wihongi	Proxy Trustee
Annette Kaipo	Proxy Trustee

We continue to strive towards ensuring our whānau, hapū and marae are supported to realise their aspirations through our vision where the sacred house of Ngāpuhi stands strong.

E te iwi, tēnā koutou katoa. It is my pleasure to report to Ngāpuhi our performance and highlights for the year under review. The past year has been momentous, with the Board making positive progress on matters of importance to Ngāpuhi within challenging times.

We continue to strive towards ensuring our whānau, hapū and marae are supported to realise their aspirations through our vision where the sacred house of Ngāpuhi stands strong "*Kia tū tika ai te whare tapu o Ngāpuhi*". It is the pursuit of this vision for Ngāpuhi that is used as one of the central themes for this years Annual Report.

The Board is steadfast towards achieving our vision for Ngāpuhi and as a leadership group persistent in the work and relationships we build to progress towards the wellbeing and prosperity of our people.

Our five year strategic plan outlines seven strategic goals that focus on building and strengthening whānau, hapū, marae, and takiwā. Specifically, these focus on communications and identity, iwi development, natural resource management, governance, whānau ora, support services and economic development.

As a Board, it is our responsibility to monitor the Rūnanga's operational progress and performance against these goals to ensure the dreams and aspirations of our people will be realised. Our monitoring and accountability role is carried out on a six weekly basis, through both takiwā and Board meetings.



Carol Dodd

Acting Chair – Board of Trustees
TE ROOPU TAKIWĀ O MANGAKĀHIA

TREATY SETTLEMENT

NGĀ KEREME MOTUHAKE O NGĀPUHI KI TE KARAUNA

The settlement of our historical grievances against the Crown remains the most significant opportunity for Ngāpuhi, and is at the forefront of the Board's minds, and indeed all those of Ngāpuhi descent. Our position is that we will support the process Ngāpuhi katoa ultimately decides upon. Our strong desire is that settlement is achieved by everyone working together in the best interests of Ngāpuhi.

One of our strategic goals is economic development, within which a strong post-settlement governance entity needs to be established. We are committed to pursuing this matter to meet the needs of our people in a post-settlement environment.

As an organisation we will need to be flexible and adapt to what our people, our beneficiaries and Ngāpuhi katoa want and need today and tomorrow. Our future steer will always come from our people.

NGĀPUHI FESTIVAL 2016

TE HUI AHUREI O NGĀPUHI

The highlight of the year was the Ngāpuhi Festival in January. It was another great success with more than 30,000 whānau, friends and community from near and far joining in the celebration of being proud Ngāpuhi. The theme for this year's festival was *Hakapiri mai Hakatata mai* and provided an opportunity for the threads of yesterday, today and tomorrow, contemporary and traditional to come together at a time when Ngāpuhi is facing challenges, and also creating opportunities for current and future generations.

The Toi Ngāpuhi Art Exhibition was, once again, a success with a strong showcase of quality artworks from the Tai Tokerau Māori Artists Collective. We are also grateful to the long-standing and trusted relationships we have with Creative New Zealand and Russell McVeagh who were key sponsors for the Exhibition.

The festival could not be delivered without a strong workforce behind the scenes, from stage hands, to the exhibition set up crew, through to the clean up of the grounds. I thank the Northland College Board of Trustees and their staff for their continued support of the festival, and allowing the Rūnanga to hold Northland's largest free music, arts and cultural festival on their school grounds.



Whānau enjoying the live entertainment at Ngāpuhi Festival 2016

Mention must also be made of the sponsors who contribute financially and in kind to ensure the growth and success of every festival. Without their support we could not achieve a festival of the scale and size we provide for our local community and the people of Ngāpuhi to enjoy. We acknowledge all our supporters and sponsors for their continued support.

At every festival, we have always been fortunate to have the support and participation of Kaumātua and Kuia. This year was no exception, where many also had an opportunity of mingling with sponsors, hosting supporters as well as enjoying the entertainment and watching everyone celebrating in their own special way.

From the time the Toi Ngāpuhi Art Exhibition opened on Wednesday evening to the closing haka on Sunday, it was yet another exciting opportunity for our people to celebrate their identity, be proud to be Ngāpuhi and enjoy the warm weather with whānau and friends.

SCHOLARSHIPS

KARAHIPĪ TAUTOKO

With a traditional focus on providing education scholarships every year, this year we extended support to 10 talented Ngāpuhi enrolled in the Graduate Diploma in Business with a specialisation in Māori Development through the University of Auckland. The programme is delivered from Waitangi to give these students easier access to tutors and content locally.

ENHANCED RELATIONSHIPS

KO TE WHANAUNGATANGA

Enhanced and meaningful relationships are critical to our pursuit of our vision for Ngāpuhi, including relationships within “Te Whare Tapu” and outside our traditional boundaries.

TE HAU ORA O NGĀPUHI

This year we welcomed Te Hau Ora o Ngāpuhi into the Rūnanga whānau providing a stronger focus on whānau health and wellbeing. I acknowledge their Chair, Hone Sadler for his commentary in this year's Annual Report, and Te Ropu Poa (General Manager) and her team for their hard work and dedication.

At a Governance/Board level we continue to have open and robust dialogue on all issues concerning the health, wellbeing and development of our people. Our strength as a leadership group has developed over the past year as we navigate our way through a number of complex and challenging issues. I am pleased a Rūnanga Trustee sits on each of the subsidiary company boards, as this will enhance and further develop strong leadership skills across the entire organisation.

NGĀTI HINE

An important and significant relationship we have is with our relations from Ngāti Hine. We continue to engage in dialogue as we seek out pathways to progress forward. The Rūnanga view our growing relationship with Ngāti Hine as an important part of the growth of Ngāpuhi moving forward.

SUPPORTING OUR PEOPLE

The wellbeing of our whānau who are, or have been incarcerated has been a huge concern for the Board, with the ever-growing numbers of Ngāpuhi being imprisoned and entering the corrections system. The number of Ngāpuhi whānau imprisoned surpasses those of other iwi and exceeds the 50% muster rate. To this end we have met at a local and regional level with both governance and operations members of Wiri and Ngawha Correctional Facilities to discuss how best we can assist our people who are imprisoned, and upon their release.

We are pleased to have Trustee Helene Leaf appointed to the National Māori Advisory Group for the Department of Corrections on behalf of Ngāpuhi.

We continue to engage in dialogue as we seek out pathways to progress forward.



Wane Wharerau

Acting Deputy Chair – Board of Trustees
NGĀPUHI KI TE WAITEMATĀ

Iwi Chairs Forum, Hokitika, December 2015



SUBSIDIARY COMPANIES OF THE RŪNANGA

NGĀ PEKA O TE RŪNANGA-Ā-IWI O NGĀPUHI

It has been another very successful year for our subsidiaries Ngāpuhi Asset Holding Company (NAHC), Ngāpuhi Iwi Social Services (NISS) and Te Hau Ora O Ngāpuhi (THOON). On behalf of the Board of Trustees, I congratulate them on their positive results and for the remarkable work they do for, and on behalf of Ngāpuhi.

TE KAHU O TAONU I

At a regional level, we have a strong collective relationship with Te Kahu o Taonui, the Tai Tokerau Iwi Chairs group. Te Kahu o Taonui represents nine Tai Tokerau iwi, and continue to meet on a quarterly basis to discuss issues and opportunities that affect us all.

This year there was a strong focus on the economic development of the region, with many northern iwi entering into post-settlement phase. The opportunities for Ngāpuhi are boundless in this respect, and the continued enhancement of these relationships will be key to our economic success for whānau, hapū, iwi and our region going forward.

IWI CHAIRS FORUM

TE KĀHUI MANUKURA Ā-IWI

At a national iwi level, Ngāpuhi continue to influence and be represented at the Iwi Chairs Forum (ICF) table, by the Rūnanga Chair and Acting Chair, assisted by a technical team from within Ngāpuhi.

The ICF comprises elected Chairs from 65 iwi throughout the motu, and meet on a quarterly basis to address issues that commonly impact on whānau, hapū and iwi across the country.

IWI LEADERS WORK STREAMS

NGĀ OHU MAHI A TE KĀHUI MANUKURA Ā-IWI

Whānau Ora Partnership Group

The Whānau Ora Partnership Group (WOPG) is an iwi-Crown partnership providing strategic leadership to Whānau Ora. This group is responsible for setting the direction and priorities of Whānau Ora, and monitoring its progress and success.

The group has equal membership of Iwi Chairs and government Ministers. Six iwi leaders are mandated by the National ICF to represent iwi. Participating government Ministers include:

- Minister for Whānau Ora
- Minister of Finance
- Minister of Health
- Minister of Education
- Minister of Social Development
- Minister of Business, Innovation and Employment.

A key role of the WOPG is to strengthen efforts to support Whānau Ora across ministerial portfolios and identify opportunities for iwi-Crown to support shared development, aims and aspirations. They have also agreed to a shared Whānau Ora outcomes framework that takes an aspirational approach to achieving whānau well-being and self-management.

During the reporting year, the WOPG convened a series of consultation hui throughout the country. The purpose of these hui was to share the work that had been done by the WOPG, specifically, the Whānau Ora Outcomes Framework. Iwi Chairs also wanted to gain a better understanding of the current reality of Whānau Ora experiences across the country and ensure progress is not divorced from the reality of whānau in our communities.

Freshwater Iwi Leaders Group

Established in 2007 the Iwi Leaders Group (ILG) is mandated by the ICF to engage directly with senior government Ministers who have a portfolio relating to freshwater reform. The focus of the ILG is to ensure the Crown recognises and gives affect to the full range of iwi rights and interests in relation to fresh water.

Ngāpuhi supports the leadership of both Tā Tumu Te Heuheu and Tā Mark Solomon within this ILG. The Principles of the ILG engagement with the Crown are:

- a. Ko te Tiriti o Waitangi te tahūhū o te kaupapa o te wai
- b. Te mana o te wai
- c. To mana motuhake o ia wai o ia iwi ki te iwi
- d. Te kaitiakitanga o ngā hapū me ngā iwi i te wai
- e. Te mana whakahaere o ngā iwi me ngā hapū ki te wai

The ILG are working on solutions to provide iwi access to water for economic development and ensuring iwi, hapū and whānau participation in freshwater management decision making, and having this reflected in Resource Management Legislation.

The ILG has consulted widely throughout Aotearoa to update whānau and provide a platform for feedback. Engagement with the Crown is done on the basis that the ILG does not have a mandate to negotiate a settlement of iwi rights and interests and they will not usurp the mana and autonomy of individual iwi.

Te Ture Whenua Māori

This continues to be another important issue for Ngāpuhi. As this report is being drafted the review of the Te Ture Whenua Act is before the Māori Affairs Select Committee. Amongst other things the ICF is seeking:

- a. A commitment from the Crown to ensure that the Ture Whenua Māori Bill is consistent with the Declaration of the Rights of Indigenous Peoples (Article 3: Indigenous peoples have the right to self determination)
- b. Commitment from the Crown to address what the Crown sees as enablers (valuation, rating, land-locked land issues)

- c. Commitment from the Crown to work through a process aimed at ensuring that no more Māori land is taken for Public works without the consent of land owners
- d. Support from the Crown to jointly establish a Māori Development Service with necessary resourcing and tools to assist Māori land owners to develop their lands
- e. A commitment from the Crown for a process to establish the Māori Development Service to carry out agreed Māori Land Services (so that it is not a government department or agency).

The Te Ture Whenua Māori Iwi Leaders Group comprises the Chairs of:

- Ngāpuhi
- Ngāti Kahu
- Waikato – Tainui
- Ngāti Whanaunga
- Ngai Te Rangī
- Ngāti Pukenga
- Te Whānau ā Apanui
- Ngāti Porou
- Te Aitanga ā Māhaki
- Rongowhakaata
- Ngāti Kahungunu
- Whanganui Iwi
- Te Arawa
- Ngāti Tūwharetoa
- Te Tauihu (8 iwi from Whakatū (Nelson)
- Wairau (Blenheim) areas
- Ngāi Tahu.

Last year we reported that this review had been on the table for almost five years. Since 2014, the ICF have been responsible for hosting over 120 consultation hui throughout Aotearoa.

The ICF see the investments by government within the realm of social justice. For most this is the completion of Treaty breaches which the Crown has apologised for including Native Land Court and Māori Land Court operations.

The key areas for government leadership is rating and co-designing the Māori Land Service, and government investment is in the area of land-locked land.

Land-locked Māori Land blocks

The Rūnanga have been granted funding to administer this project across three rohe: Tai Tokerau (within a 50km radius of Kaikohe), Northern Tākitimu and Aotea. The project includes high level research to identify relevant land blocks, the options to achieving access and the investment required.



Ngawai Tuson

Trustee

NGĀPUHI HOKIANGA KI TE RAKI



Annette Kaipō

Proxy Trustee

TE RŌPU TAKIWĀ O MANGĀKAHIA





Te Rau Allen

Trustee

TAIĀMAI KI TE MARANGAI



Keith Wihongi

Proxy Trustee

NGĀPUHI KI TE HAUĀURU





A rare opportunity to view the original Treaty of Waitangi

HE TOHU EXHIBITION

HE WHAKAKITENGA MOTUHAKE MŌ NGĀPUHI

In 2015, the Rūnanga was approached to participate in the permanent archive exhibition in Wellington, that aimed to bring together Te Tiriti o Waitangi, He Wakaputanga, and the Women's Suffrage Petition all under one brand in their newly expanded home at the National Library of New Zealand. As kaitiaki ā-iwi of Te Tiriti o Waitangi and He Wakaputanga, it has been our role to work closely with the working party for this exhibition to ensure the integrity of our two most precious documents is maintained. Through the Chair and the CEO, we have also had a key role on the Exhibition Technical Advisory Group.

We will continue to uphold the interests of Ngāpuhi, and iwi Māori, as these documents make their journey to their new resting place next year.

TAKIWĀ

This year the trustee and executive committees for three takiwā, Ngāpuhi ki te Hauāuru, Hokianga ki te Raki and Ngā Ngaru o Hokianga completed their tri-annual election processes. We are pleased to report that Trustee Tau, Trustee Leaf and Trustee Tuson were re-elected as Trustees for their respective takiwā. We also congratulate all those who have been elected into the respective executive roles of Proxy Trustee, Chair, Secretary and Treasurer.

The Board would also like to extend a special thanks to former Trustees Paul Haddon and Joe Bristowe. Both Paul and Joe demonstrated sound, calm and invaluable leadership to the Board.

CHIEF EXECUTIVE APPOINTMENT

TE KAIHAUTŪ HOU O TE RŪNANGA-Ā-IWI O NGĀPUHI

The Board went through a robust recruitment process lasting three months, which registered strong interest from many experienced candidates, including applications from Ngāpuhi living overseas.

In August the Board were pleased to announce the appointment of Tony Dowling (Ngāpuhi, Ngati Tautahi) as our new Chief Executive.

Tony comes to us in November, from his role as Director of Innovation and Development at Te Wānanga o Aotearoa.

Tony joins the Rūnanga at a defining moment of our history, with opportunities that can advance our people. He provides the Rūnanga and Ngāpuhi with business management excellence and many other skills and experience, to help us realise our vision for Ngāpuhi.

We welcome Tony and his whānau home to Te Tai Tokerau.



Mike Kake

Trustee

TE TAKIWĀ O NGĀPUHI
KI WHANGAREI



Lorraine Young

Trustee

TE RŪNANGA O TAUMĀRERE KI
RAKAUMANGAMANGA





Helene Leaf

Trustee

NGĀ NGARU O HOKIANGA



Brian Joyce

Trustee

TE TAKIWĀ O NGĀPUHI KI
TE TONGA O TĀMAKI MAKAURAU



*My thanks is extended to
Te Rōpu Kaumātua Kuia o
te whare tapu o Ngāpuhi.
You are the backbone of our
whānau, hapū and iwi.*

CONCLUSION

HE KUPU WHAKATEPE

In conclusion, the work streams I have reported on are an illustration of significant work streams that the Rūnanga is involved and engaged in leading and supporting. Much more is undertaken to continue to empower whānau and hapū and to grow influence on behalf of our people.

I would like to take this opportunity to thank the Board of Trustees for their unwavering support and counsel during what has been an unprecedented year. Their contribution and generosity of time has been invaluable and enabled continued stability and growth across the organisation.

On behalf of the Board I would also like to thank our retiring Chief Executive Allen Wihongi, for his tireless years of service to Ngāpuhi.

In last year's Queen's Birthday Honours, Allen became a Member of the New Zealand Order of Merit for services to Māori, the arts, and education. We warmly congratulate him for this well-deserved recognition. Allen also remains on the Technical Advisory Group for the *He Tohu* permanent Archive Exhibition in Wellington.

Allen ensured there was a steady platform for his successor. I would like to acknowledge Erena Kara, who stepped into the role of Acting Chief Executive in February this year, for her commitment and leadership of her team to help fulfill our mission and realise our vision for Ngāpuhi.

A special mention and acknowledgement must be made of our staff, our hard working kaimahi across the Ngāpuhi Rūnanga Group. The Board places high value on their collective commitment, dedication and excellence they each bring to their respective roles, demonstrated on a daily basis. These incredible people are the heart and soul of the Rūnanga. Our governance could not function without them, and we could not achieve all that we have achieved on behalf of Ngāpuhi without them.

Finally but by no means least, my thanks is extended to Te Rōpu Kaumātua Kuia o te whare tapu o Ngāpuhi. You are the backbone of our whānau, hapū and iwi. Thank you each and everyone for being our shining light in times of darkness, our peace in times of disagreement and your calmness in times of tumult.

No reira e te iwi, e ngā mana, e ngā reo, tēnā koutou katoa.

Carol Dodd

*Acting Chair – Board of Trustees
Te Rūnanga-Ā-Iwi O Ngāpuhi*

GLOSSARY OF TERMS:

TRAION	Te Rūnanga-Ā-Iwi O Ngāpuhi
THOON	Te Hau Ora O Ngāpuhi
NISS	Ngāpuhi Iwi Social Services
NAHC	Ngāpuhi Asset Holding Company
ICF	Iwi Chairs Forum
ILG	Iwi Leaders Group (Freshwater)
WOPG	Whānau Ora Partnership Group

